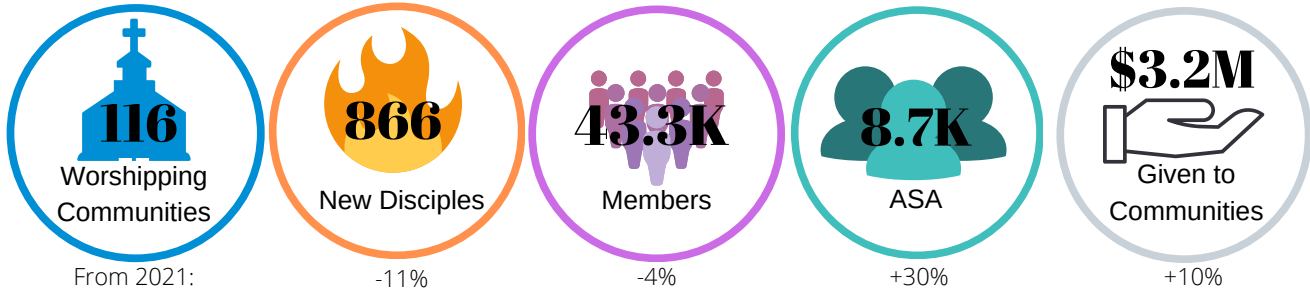


2022 Vitality | DioATL

Parochial Report Overview



Attendance Trends

Parishes were at about **62%** of Pre-Covid in-person attendance

In 2022, the average parish was at about 62% of their pre-Covid in-person attendance. This is up from last year, when parishes were at about 50% of pre-Covid attendance.

Average Sunday Attendance (ASA)

- The Episcopal Church (TEC): Over one third of churches have an ASA of 25 or fewer
- DioATL: More than half of churches have ASA of 51-150

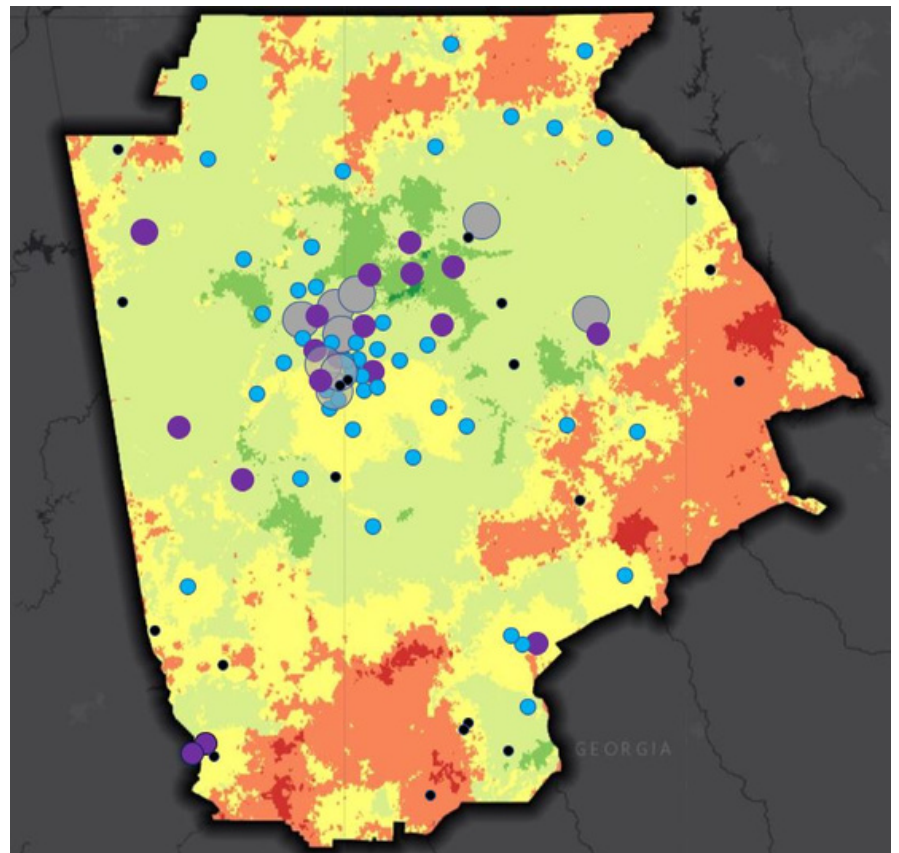
Median ASA

- TEC: 35
- DioATL: 75.5

Meaning half of churches in DioATL have less than 75.5 in attendance on Sunday and half have more.

Median Membership

- TEC: 111
- DioATL: 264



ASA: <50 50-120 120-200 200+

